



12th Annual

ALL GRANTEES MEETING

| 2025 |

November 19

8:30 AM – 3:00 PM



Acknowledgements

We acknowledge the land on which we are meeting – the ancestral lands of **Duwamish, Muckleshoot, and Snoqualmie Tribes** – and recognize their continuing connection to land, water, and community. We honor with gratitude the land itself and the **Coast Salish people** who are still here today.

We recognize the systemic oppression of Indigenous people, enslaved Africans, and other historically exploited people which has led to the disproportionality in representation and disparities in health of these communities we serve.



Welcome!

TOGETHER WE WILL CREATE A SAFE LEARNING SPACE

- Be kind and respectful.
- Give grace and offer help.
- Seek support and ask questions.
- Include everyone.
- Have fun! 😊



PHPDA Staff



Christina Bernard
(She/Her)
Acting Executive
Director



Mallory Fitzgerald
(She/Her)
Grants & Program
Specialist



Whitney Regan
(She/Her)
Grants Coordinator



Nicole Porcello
(She/Her)
Office Coordinator

Championing Health Equity

The mission of the Pacific Hospital Preservation & Development Authority is to support and provide funding for the provision of the best possible healthcare in the **Puget Sound region** in an effort to **eliminate disparities** in access to health resources and improve health outcomes.



Thank You, Sponsors!

CENTURY
PACIFIC

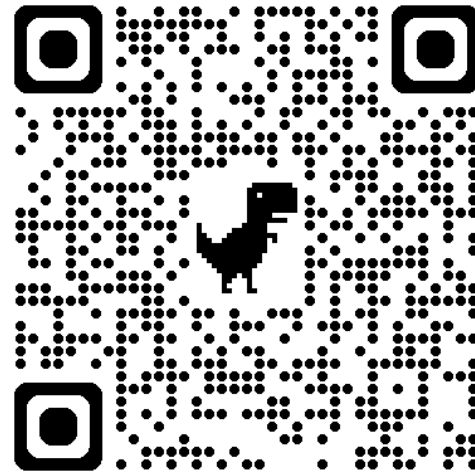




2025 All Grantees Meeting Webpage

Visit the All Grantees Meeting webpage for event information, including agenda, presentation slides and contact lists.

<https://phpda.org/all-grantees-meeting-2025>




PHPDA Opening Remarks



Christina Bernard *(She/Her)*
Acting Executive Director of
Pacific Hospital PDA



Douglass Jackson *(He/Him)*
Pacific Hospital PDA
Governing Council Chair



Presentations: 2023 – 3rd Year Grantees

- Afghan Health Initiative
- Downtown Emergency Service Center (DESC)
- Elizabeth Gregory Home
- Neighborcare Health
- Peer Washington
- UTOPIA Washington
- Youth Experiential Training Institute (Y.E.T.I.)



Afghan Health Initiative

Promoting Health through Lived Experience



**Advancing Maternal Health Equity for
Immigrant and Refugee Women**

About Afghan Health Initiative

Afghan Health Initiative (AHI) is a community-centered organization dedicated to empowering immigrant and refugee families to achieve stability and self-sufficiency. By addressing the social determinants of health, we provide culturally and linguistically tailored services that foster resilience, promote equitable access to opportunities, and improve overall well-being.

Our Focus Areas:

- **Case Management:** Connecting families with critical resources to support their resettlement journey.
- **Youth Empowerment:** Leadership development and educational support for immigrant and refugee youth.
- **Whole Family Support:** Wraparound supports that strengthen family stability, from essential items to educational resources and guidance that empower the whole family unit.
- **Health and Wellness:** Addressing physical and mental health needs to promote holistic well-being.
- **Economic Development:** Employment support and skill-building to enhance financial independence and stability.

Our Journey So Far

Across two years of PHPDA support, AHI has deepened its maternal health work through consistent listening, learning, and community-led design. This journey has clarified what Afghan women need most and shaped the key outcomes that now guide our journey ahead:

- Created reliable and culturally grounded spaces for Afghan women to learn, ask questions, and share their lived experiences
- Strengthened women's confidence in understanding their maternal health rights and engaging in prenatal and hospital-based care
- Strengthened collaborations with healthcare providers to deepen their awareness of Afghan cultural norms, language needs, and maternity care expectations
- Elevated community voice in shaping priorities, program direction, and maternal health solutions

Lessons Learned

As AHI deepened this work, ongoing conversations with our community and healthcare partners revealed several important lessons that shape how we move forward.

1. Information alone is not enough; women need support while navigating the healthcare system, not just learning about it
2. Trust is a foundational driver of maternal health decisions, especially for women with past medical trauma or limited language access
3. Community forums create space for honest dialogue and surface barriers that women often do not feel safe naming in clinical settings
4. Healthcare providers want to deliver culturally responsive care but need support to bridge cultural, linguistic, and communication gaps in real time
5. Navigation support emerged as the most urgent and community-identified need for improving maternal health access and care experiences

Our Journey Ahead

Building on everything we have learned, AHI has moved into the next phase of this work by embedding a dedicated Community Health Navigator (CHN) into our maternal health efforts. This direction reflects the clearest need named by Afghan women and affirmed by our provider partners.

1. Providing navigation support through our CHN to ensure Afghan women receive culturally responsive, coordinated care across prenatal, hospital, and postpartum settings
2. Strengthening collaboration with healthcare providers to improve cultural understanding and care experiences
3. Continuing community workshops and discussions to keep women's voices at the center of program decisions
4. Using navigation insights and feedback to refine program design and inform long-term sustainability

DESC ConnectCare

Part of a Constellation of Programs

DESC offers:

- Five behavioral health programs
- Crisis response services
- Permanent Supportive Housing
- Emergency Shelter
- SUD counseling

Goals and Values:

- Eliminate unsheltered homelessness
 - Housing First
 - Work with the most complex and difficult clients
-

ConnectCare: Targeted & Intensive Support

For a small (25-30) cohort with:

- Highly complex, multi-provider medical needs (long-term)
- High-cost or high-impact interventions (short term)

Outcomes:

- Decreased missed visits
- Increased referrals & completions
- Increased medication adherence
- Increased client medical self-efficacy

Key Learnings

- Meaningful changes begin with relationships- with clients and external partners.
 - Care plans need to be highly individualized and tailored to clients' needs and self-identified goals. Patient-centered decision making is paramount.
 - Advocacy plays as large a role as navigation in working with aging, vulnerable populations.
 - The medical system is convoluted, fragmented, dysfunctional and failing.
-

What's next? Thunderdome!

- Educate clinical teams in strategies for health-engagement conversations, navigation tips and practical work-arounds for systemic barriers faced by our population
 - Reassess scope of integrated health care coordination in case management setting-feasibility, affordability & scaling
-

Elizabeth Gregory Home (EGH) provides a welcoming and respectful refuge where all women who are experiencing homelessness, trauma, or economic insecurity have access to a caring community and critical resources.



Health Navigation Highlights

Clinics – Weekly Nursing Clinics, SUD Treatment Van, Dental Clinic, and more!

Education –Classes on nutrition, STIs, COPD, and a range of healthcare topics that affect our clients.

Supplies – Distributing mobility aids, first aid kits, and harm reduction supplies

Advocacy – Navigating insurance, anesthesia, and accessing care



Year in Review



MAKE FRIENDS WITH FIBER!

Join UW nutrition students Gabby and Katie for a lively discussion on the health benefits of fiber

A green poster with illustrations of a banana, a jar of jam, an apple, and a bowl of cereal. The text is in white and green.

COPD Education

Friday November 21st

@ 1 p.m.

Learn more about COPD and Lung Health

A blue and white graphic with a dotted pattern in the top right corner and a dashed arrow pointing from the text to the bottom.

Healthcare Corner

SHOPPING FOR A THERAPIST

How do I find a provider I like?
How do I know if I like a therapist?
What should I look for?

WEDNESDAY MAY 14TH AT 1 PM

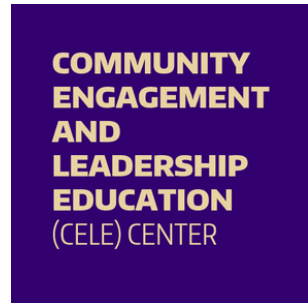
A blue graphic with a shopping cart icon containing small human figures. The text is in white and yellow.

HEAT RISKS & SAFETY

Learn how to identify signs of heat stroke and other warning signs during hot weather.

A circular graphic with a yellow and orange gradient background and a white border. The text is in black.

Relationships Fostered



Looking Forwards

Contingency Management!

- Just this month, we started enrolling our clients in a Contingency Management program
- The goal of this program is to assist clients in reducing their use of stimulants like methamphetamines

Clinics at the Day Center

- Cowlitz Mobile medical van now has monthly clinics at the day center for SUD treatment
- Medical Teams International Dental Clinics
- Massage Therapy

PHPDA 2025 ALL
GRANTEES MEETING:



**NEIGHBORCARE
MIDWIFERY**

NOVEMBER 2025







PROGRAM OVERVIEW

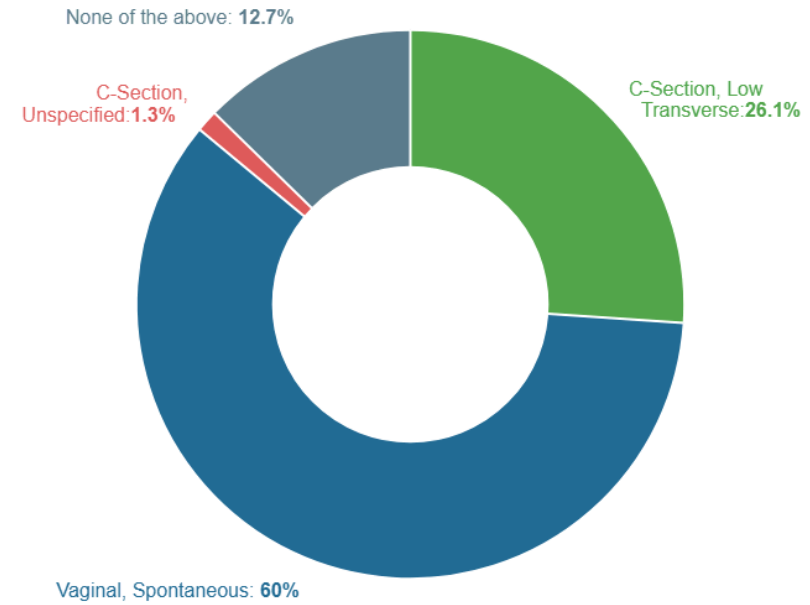
- **Goal:**
 - Ensuring access to midwifery-led, community-connected care for all populations in Seattle. Our interdisciplinary team provides culturally congruent, relationship-based care grounded in shared decision making, individualized coordination, and patient empowerment.
 - To analyze and address factors contributing to rising NTSV cesarean rate, particularly disparities between various populations in the U.S., through a data-driven quality improvement initiative aimed at reducing unnecessary cesareans and improving equitable birth outcomes.
- **Scope:**
 - A group care model offered at five clinics and 24/7 inpatient coverage at Swedish First Hill.
 - Provides full-spectrum perinatal care from intake through postpartum.
 - The PHPDA grant specifically funds our Perinatal Coordinators (PNCs)* who provide individualized education, care coordination, and patient guidance throughout pregnancy and postpartum, ensuring timely follow-up for key medical needs such as ultrasounds, IV/hydration, lab work, and specialist referrals (MFM, OB/GYN).

SUCSESSES AND HIGHLIGHTS: STRENGTHENING DATA SYSTEMS, PATIENT SUPPORT, AND TEAM RESILIANE

- Enhanced Data Collection, Availability, and Storage
 - Implemented *Epic SmartPhrases & Dashboards* to capture full care coordination efforts and patient outcomes.
 - Migration to *BirthTracks* database for real-time outcome monitoring and longitudinal reporting.
 - *Impact: Increased accuracy and transparency in measuring outcomes, care coordination, and patient engagement.*
- Improved Care Coordination and Patient Support
 - Introduced OB Referral Specialist role to streamline administrative tasks – allowing PNCs to focus on high-touch patient engagement
 - PNC role increased patient connection to essential community resources (WIC, First Steps, Hopelink, Doulas, NFP, Wellspring, DME, and breast pump programs)
 - *Impact: Expanded transportation, insurance, and referral support systems for vulnerable populations.*
- Collective Strength and Adaptability
 - Despite leadership changes and staff transitions, OB team maintained a shared commitment to mission and operational stability across multidisciplinary roles.
 - Increased collaboration and workflow alignment with FMPHN providers and organizational partners (Kaiser and Swedish).
 - *Impact: Reinforced unity, morale, and ring of defense preparedness through cross-role collaboration and coverage efforts.*

 **All Time** **395**

 C-Section, Low Transverse	103
 Vaginal, Spontaneous	237
 C-Section, Unspecified	5
 None of the above	50



NCH PATIENT OUTCOMES 2025

TAKEAWAYS AND NEXT STEPS

Key Learnings Over Past Three Years

- Identified Need for Consistent, Centralized Data Tracking
- Continue the assessment and design of workflows to optimize patient care coordination and support
- Time and time again our OB team has shown its commitment and resilience in supporting each other and our patients through any challenge.

Plans Moving Forward

- Build on Data Systems for Quality Improvement
- Re-design, Rebuild, and Stabilize Workforce
 - Community Health Navigator OB Panel Role

- +
 - · South King County
Municipal Courts
Peer Integration
Pilot (Year 3)



Peer Principles

- Privacy & Confidentiality
- Trauma-Informed
- Harm Reduction
- Connection & Trust
- Self-Defined Recovery
- Voluntary & Member-Driven





Key Learnings

- System Integration Takes Time and Trust
- Peer Support Is Transformational, but Impact Is Often Delayed
- Data and Ethics Must Align With Peer Principles
- Professional Development and Lived Expertise Drive Quality
- Adaptability Ensures Sustainability:



Looking Ahead / Areas of Focus

Resume and Expand Outcomes Tracking

Staff Stability and Training

Collaboration and System Navigation

Sustain Data-Informed Storytelling



THANK YOU

Marjorie Drieu
253-426-0771
Marjorie@peercommunity.org





Founded and led by transgender women of color from the Pacific Islands migrating to the Pacific Northwest

Mission

We are actively replacing systems of oppression with ecosystems of care and safety for all our communities through Black and Brown organizing, prioritizing land and bodily autonomy, and reclaiming our cultural narratives.

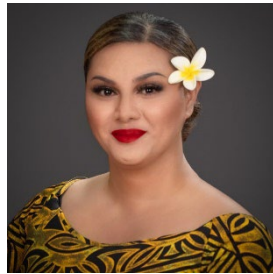
Vision

A world of abundance, autonomy, and harmony, where all forms of supremacy cease to exist for all life.

Mapu Maia Clinic

A Place of Refuge

Closing the gap between holistic health services and the well being of our community



Questions?

206.774.9746 tel.

mapumaiacclinic@utopiawa.org

<https://utopiawa.org/mapu-maia-clinic/>

Community Outreach

Meeting our communities where they are

Key Communities: Sex Workers, Houseless, Use Disorders

Services

- Rapid STI Testing
- Education
 - Naloxone
 - Substance Testing Strips
- Wound Care
- Warm Meals
- Linkage to Care
 - Medical
 - Mental Health
 - Recovery Navigation
 - Care (Social) Services
 - Food Access
 - Hygiene

Supplies

- Naloxone
- Substance Testing Strips
- Safe Syringe Services
- Safe Smoking Supplies
- Wound Care Kits
- Safe Sex Supplies
- Personal Safety Kits
- Clothing

Starlight & Moonlight Outreach

**Sex Worker
Empowerment Initiative**



Harm Reduction

Asylum Seeking Encampments

Care Work (Social Support Services)

Community showing up for each other

Services

- 1:1 Care Work, Goal Mapping
- Name & Gender Marker Changes
- Medical Services Navigation (e.g. surgical support)
- REAL TALK Support Group
- HIV Early Intervention and Resource Navigation
- WA State Benefits Enrollment
 - AppleHealth, EBT, SNAP
- Electrolysis
- Resource Navigation
 - Housing
 - Education
 - Food Access
 - Other (e.g. Personal & Family needs)



Direct Medical Services

Meeting our communities where they are

Services

- Gender Affirming Care
 - Hormone Access, Referral/*Letters of Support* for Surgical Procedures, Thrive Causemetics, *Electrolysis*
- Sexual Health Clinic
 - STI Screening & *Treatment*
 - PrEP, PEP & doxyPEP access
 - Plan B, contraception and safe sex supplies
- Medical Case Management
 - HIV Care Linkage
 - Referrals, Scheduling, Transportation
- Primary Care
- Urgent Care
- Community Education
- Mental Health
 - Cultural Health Practices



LOOKING TO THE FUTURE



Mobile Clinic Services



Smoking Cessation Program



Vision Support



Dental Support



Education

Mahalo! Fa'afetai! Thank you!



YETI



 **YETI**



YETI



YETI





YETI





Q&A: 2023 – 3rd Year Grantees

- Afghan Health Initiative
- Downtown Emergency Service Center (DESC)
- Elizabeth Gregory Home
- Neighborcare Health
- Peer Washington
- UTOPIA Washington
- Youth Experiential Training Institute (Y.E.T.I.)





(10) Minute Break

THANK YOU SPONSORS!

CENTURY
PACIFIC




COLUMBIA BANK



**GREENWOOD
OHLUND**



**PACIFICA
LAW GROUP**



Presentations: 2024 – 2nd Year Grantees

- Chief Seattle Club
- Downtown Emergency Service Center (DESC)
- Encompass Northwest
- Harborview Medical Center
- HealthPoint
- Hepatitis Education Project (HEP)



**CHIEF
SEATTLE
CLUB**

Traditional Wellness Team

Service Utilization over 3 years

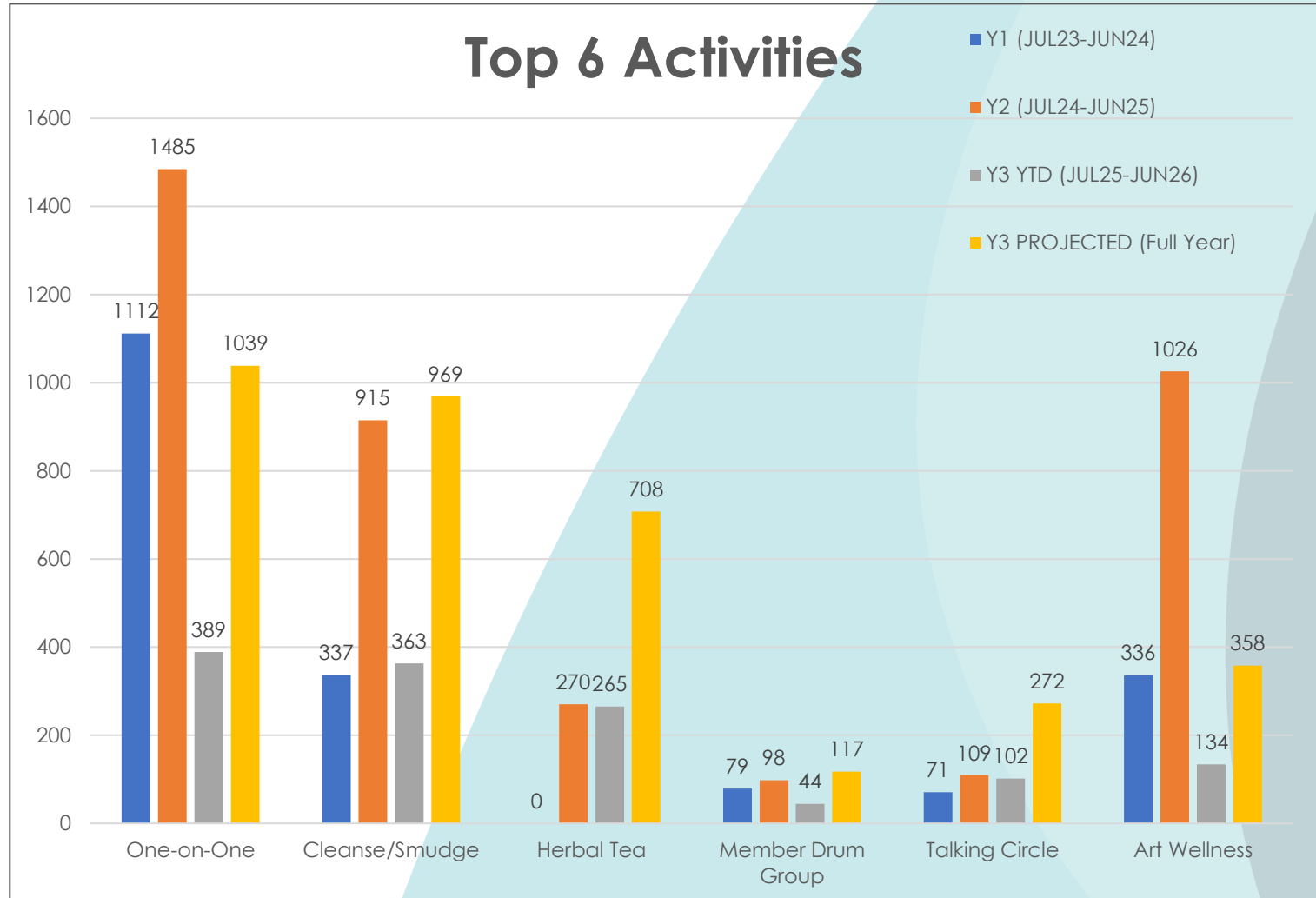
Growth Rates

Activity	Y1→Y2	Y2→Y3 (PROJECTED)
One-on-One	34%	-30%
Cleanse/Smudge	172%	6%
Member Drum Group	24%	20%
Talking Circle	54%	150%
Art Wellness	205%	-65%
Herbal Tea	N/A	162%



**CHIEF
SEATTLE
CLUB**

Top 6 Activities



What is to come for Traditional Wellness?

- Domestic Violence specific talking circles
- Wellbriety Movement added to each site in 2026
- Traditional Foods and regalia making added to each site in partnership with local native chefs and Coast Salish business owners of trades



**CHIEF
SEATTLE
CLUB**



We raise our hands to PHPDA



Supporting Chief Seattle Club's Mission

The generosity of our funders empowers us to pursue innovative projects and fulfill our organizational mission to provide sacred space to nurture, affirm, and strengthen the spirit of urban Native people.

Valued Partnership

We deeply appreciate the trust and partnership of PHPDA, which drives our ongoing success and growth for continued whole health to support the emotional, mental, physical, and spiritual health of all Chief Seattle Club relatives.



**CHIEF
SEATTLE
CLUB**



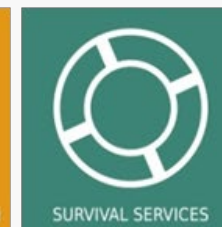
HOUSING AND HEALTH
TO END HOMELESSNESS

DESC Opioid Recovery & Care Access Team – Patient Outreach Division

Date: 11/19/2025

Presenters: Penelope Toland & Nicole Wood

Downtown Emergency Service Center



ORCA-POD (formally DESC Opioid Treatment Network)

- **Low barrier** Medication for Opioid Use Disorder Clinic
 - Outreach team works in collaboration with DESC's ORCA center to bring medication into community
 - Permanent Supportive Housing
 - Shelters
 - Tent Encampments
 - Tiny House Villages
 - Utilizing Novel Protocol to help people get onto Sublocade injection

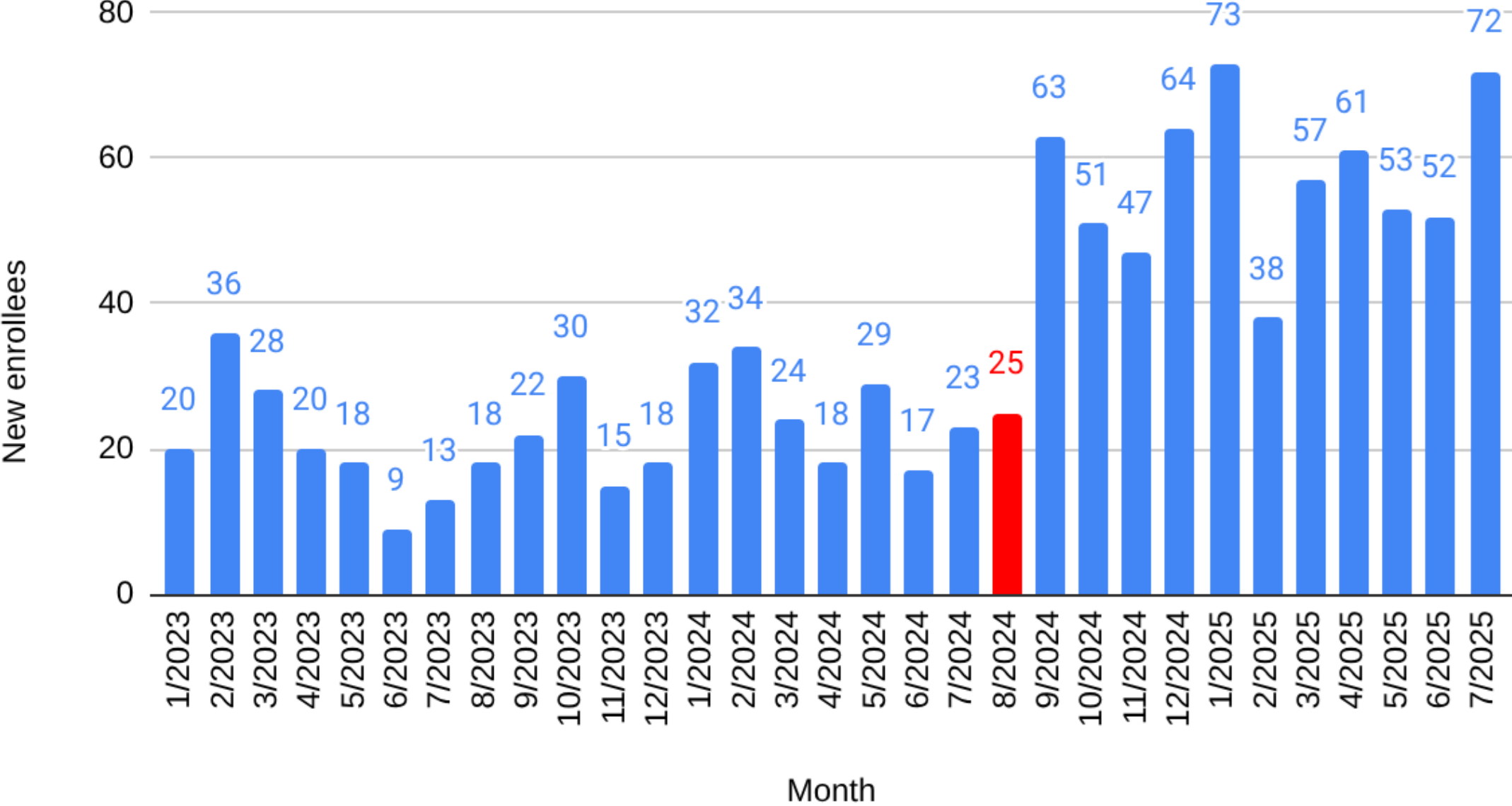


Learnings & Challenges

- If you give people a viable pathway to care— they will come!
 - Rapid increase in intakes
 - Increase in number of people on monthly injections
- Success based on multiple outreach attempts— how do we maintain our ability to do this well?



New enrollees to DESC's OUD treatment program



Plans for the future

- How can we be more efficient?
 - Plan for more collaboration with other DESC programs
 - Work towards a schedule for outreach for better care coordination
- Importance in working with community partners in helping develop more outreach based MOUD care!





encompass
Children. Families. Community.

Community Based Services

Encompass Northwest

About Us

At Encompass, we passionately believe that every family deserves a place to turn when they need help. Through [Early Learning](#), [Pediatric Therapy](#), and [Family Enrichment](#) programs for children ages 0-11 and their families, Encompass has given thousands of children the foundation they need to get the positive start and thrive for a lifetime.

With locations in Snoqualmie, North Bend and Carnation, plus a host of programs offered at community locations and in the home, Encompass supports children and families across the Snoqualmie Valley and greater Eastside. Just like parents, we hold ourselves to the highest standard as we reach out to and embrace children at the most critical stage in their development.

OUR MISSION

We partner with families to build healthy foundations for children.

OUR VISION

A community where ALL children thrive



encompass
Children. Families. Community.

Community Based Services

What is it?

Our Community Based Services (CBS) program provides therapeutic services to children within their school/childcare environment, integrating mental health, speech and language and occupational therapy support directly into the educational setting. By bringing therapists into schools, we aim to reduce barriers to accessing therapies and improve outcomes through a holistic and collaborative approach.

What are the benefits?

- Increased therapy attendance
- Reduced stigma associated with receiving therapy services
- Enhanced collaboration between therapists and educators
- Seamless integration of therapeutic strategies into daily school routines



encompass
Children. Families. Community.

Community Based Services

What does it look like?

Our Community Based Services team partners with schools and childcare to provide:

- **On-site Therapy:** Licensed therapists conduct sessions within the school premises, eliminating transportation barriers and reducing time away from classes.
 - In-classroom sessions: Therapists observe and intervene in the child's natural learning environment.
 - Playground sessions: Therapy occurs during recess or outdoor activities, allowing for social skills development in real-time.
 - One-on-one sessions: Private sessions in designated spaces within the school/childcare facility when appropriate.
- **Teacher Collaboration:** Therapists work closely with educators to:
 - Share strategies for supporting the child's physical, emotional and behavioral needs in the classroom.
 - Develop consistent approaches between therapy and daily school life.
 - Provide teachers with tools to reinforce therapeutic goals throughout the school day.
- **Integrated Care Model:**
 - Regular communication between therapists, teachers, school counselors, and administrators.
 - Coordination with families to ensure continuity of care between school/childcare and home environments.



encompass
Children. Families. Community.

Community Based Services

What is the PHPDA Grant funding?

Full Time Family Services Coordinator

- Maintaining relationships with current schools/childcares
- Connecting with and recruiting new community partners
- Assist families with the intake process
- Coordinate with therapy supervisors on evaluation scheduling
- Collaborate with Family Engagement Manager (clinic) to ensure all families receive same level of care
- Communication with community partners and families

The hiring of the CBS Family Services Coordinator is increasing efficiencies within the program and is enabling program growth. We have added 7 new sites this year and have served 164 children.



encompass
Children. Families. Community.



Harborview Medical Center Youth Clinic

We provide walk-in primary care at two King County shelters—Auburn (Y-Social Impact Center) and Seattle (ROOTS YAS)—for youth ages 12–26 experiencing homelessness.

As part of Harborview Medical Center's Pediatric team, our mission is to deliver accessible, judgment-free primary, preventive, and mental health care to some of King County's most vulnerable residents. No appointments required.

Overview of Expansion

Harborview Medical Center has expanded shelter-based clinics for homeless youth and young adults, increasing medical provider presence and introducing mental health services (under development).

Our Goals

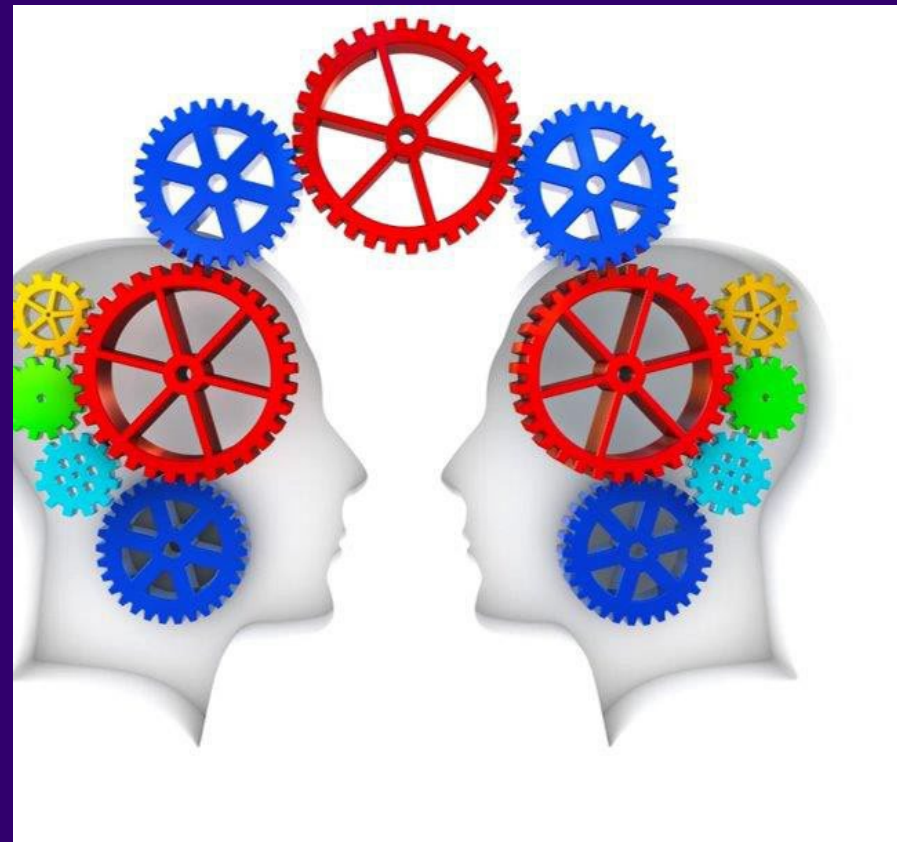
- Reduce barriers by offering primary, acute, and behavioral health services at shelters.
- Increase access and uptake of medical services among unhoused youth.
- Build trust with clients, shelter staff, and community partners to increase awareness and use of our services.
- Through referral, skills-coaching, and follow-up, connect youth to permanent medical & behavioral health services.



What we have learned

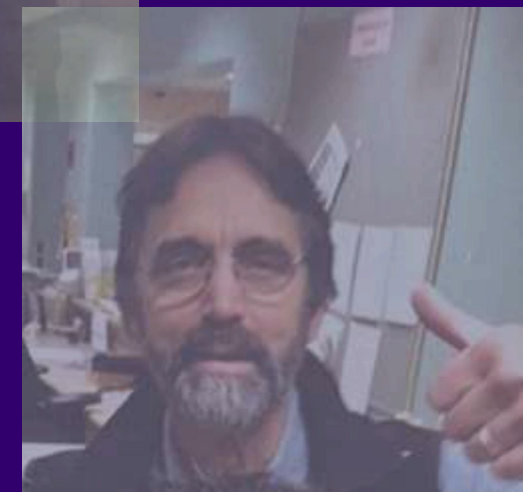
Key Insights

- **Accessibility is critical:** Many unhoused youth lack consistent access to mental health and primary care services.
- **Walk-in model works:** No-appointment care reduces barriers and increases engagement.
- **Safe, judgment-free spaces matter:** Providing care in familiar shelter environments builds trust.
- **Integrated approach:** Combining psychiatric care with preventive and mental health services addresses complex needs.
- **Community partnerships are essential:** Collaboration with shelters (Y-Social Impact Center and ROOTS YAS) expands reach and impact.



Challenges

- **Challenges**
- Partner organizations expanded onsite mental health services, creating overlap and requiring us to redefine our role.
- Staffing constraints, hiring challenges and shifting priorities made it necessary to reallocate resources effectively.
- **Adjustments**
- We plan to reposition our focus from general mental health therapy to psychiatry, complementing partner strengths rather than duplicating services.
- Adopted a more adaptive staffing model to respond to changing needs and maintain continuity of care.



Thank you PHPDA

W



YMCA shelter - Auburn



Youth Clinic at Annual Doorway Project Resource Fair



ROOTS Youth Adult Shelter -Seattle



11/19/25

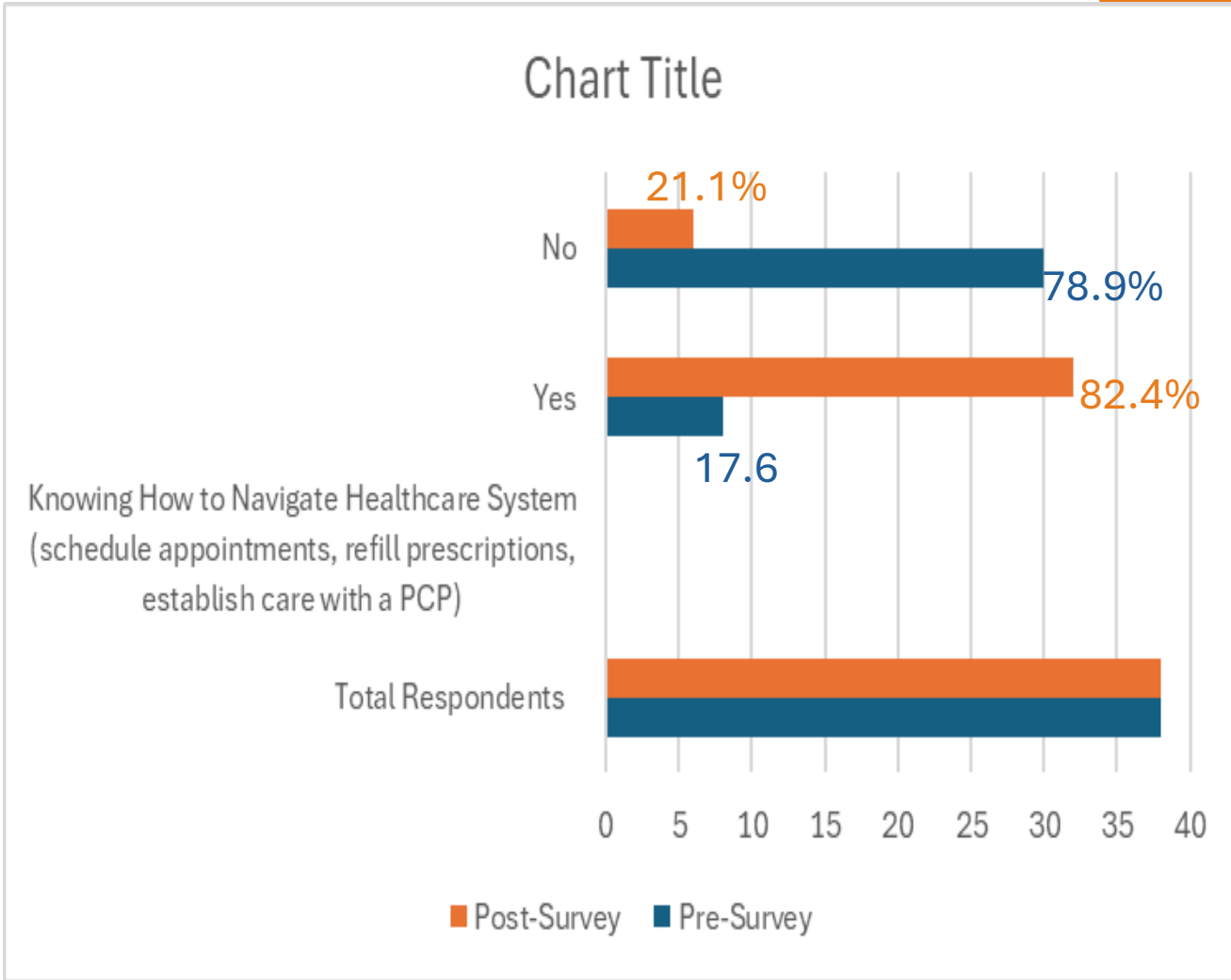


PHPDA-Asylum Seekers Project

Presenters:
Fidelie Nawej
Lydia Bukonde

Lessons Learned from the First Year

Program Purpose	Desired Outcomes
<p>Outreach Care Navigation</p> <ul style="list-style-type: none"> Care Connection Appointment Scheduling and Follow-Up Health care Clarification Language support Resource Referrals Health education (Workshops) 	<ul style="list-style-type: none"> Program benchmark ensure that 80% of asylum seekers at the shelter attend their recommended and scheduled appointments and understand how to navigate the healthcare system. Support asylum seekers in establishing care with a primary care provider and receiving medical and dental services.
<p>Healthcare costs removal</p> <ul style="list-style-type: none"> Health care costs cover through PHPDA grant 	<ul style="list-style-type: none"> Complete 8 educational health sessions for asylum families at the shelters.
<p>What Services do we cover?</p> <ul style="list-style-type: none"> Primary and urgent care Dental urgent care 	



10 Educational health sessions reached



5:28
Pona Kobenga Ambulance

Mpo na mpasi ya noki Esengaka Lisungu ya mbangu na ba minganga/basali ya lopitalo
 - Eza kaka te pona Transport
 - Mosolo (\$\$\$)

Examples:

- o Life or limb threatening
- o Makambo ya mpasi makasi - Ko pema pasi, tolo pasi, Kolemba
- o Ko bunga maloba, Mutu Pasi makasi, ko perdre makanisi (conscience)
- o Zemi - Pasi ya ko bota (in labor), to mpe Moyen mosusu yakoza transport na lombang eza te.






Challenges Faced and Adjustments Planned

Challenges	Adjustments planed
Many asylum seekers have moved into permanent housing and started working.	connection with apartment management to drop off flyers and maintain contact
In-person workshops are no longer feasible for everyone.	Moved to hybrid and remote workshops.
Transportation to clinics and back home	Exploring funding options to support transportation
Limited resources for car seats and strollers for infants and toddlers.	Seeking for additional funding to provide these items.
Lack of culturally appropriate mental health providers	We continue to support their mental health needs through available resources
Limited or no resources to connect patients to	We continue to connect patients with providers and nonprofit organizations

Thank you!



Questions?

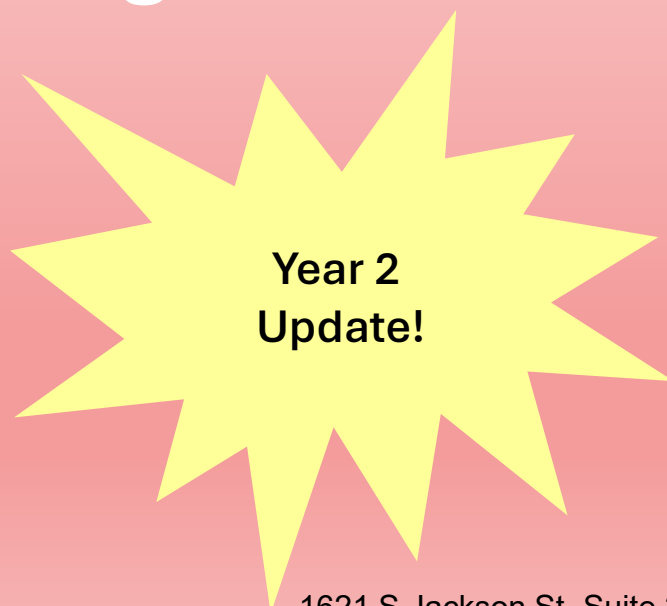


Hepatitis Education Project



Health and Harm Reduction Services at Encampments and Supportive Housing Sites

Eamonn McGonigle, Outreach Care Coordinator
Kimberly Taber, Care Coordination Program Manager



**Year 2
Update!**

HCV Treatment at Encampments

Focus on
unhoused folks
and people who
use drugs

Limited HCV test
& treat services in
SKC

Bring HCV
treatment to where
people live

Low-barrier
pharmacist-led
model

Project Updates



Hired outreach worker, updated outreach van, familiarized with SKC



Reached 25% of yearly testing goal in this first quarter



Sites and Partners

ETS Renton

Kent Lutheran Church

Calvary Lutheran Federal Way

DESC

Catholic Community Services



Colocation of Services

ETS REACH

King County Street Med

Free dental van

Lessons Learned

- Higher reactivity rate
- Encampments in SKC are less established and harder to reach
- Challenges with harm reduction laws
- Focus on community gathering points
 - Churches
 - Methadone Clinics
 - Soup Kitchens/Community Meals



Thank You!



We are immensely grateful to:

- PHPDA
- Kelley-Ross Pharmacy
- ETS REACH
- And many other partners and community members





Q&A: 2024 – 2nd Year Grantees

- Chief Seattle Club
- Downtown Emergency Service Center (DESC)
- Encompass Northwest
- Harborview Medical Center
- HealthPoint
- Hepatitis Education Project (HEP)





Lunch & Networking

THANK YOU SPONSORS!

CENTURY
PACIFIC



COLUMBIA BANK



**GREENWOOD
OHLUND**



**PACIFICA
LAW GROUP**



Thank You, Sponsor!

CENTURY PACIFIC

CenturyPacific has provided strategic real estate advisory and brokerage services to the PHPDA for over 15 years.

<https://www.centurypacificlp.com>



Thank You, Sponsor!



COLUMBIA BANK

Columbia Bank is committed to empowering businesses and families as they pursue their ambitions. With a team of dedicated professionals and a comprehensive suite of financial solutions, they offer specialized expertise and personalized support tailored to meet each clients' needs at every stage. As one of the largest banks headquartered in the West, their reputation is built on forging strong relationships, providing expert advice, and delivering resources tailored to each customer's unique journey, whether it is building a business or securing a family's future.

<https://www.columbiabank.com>



Thank You, Sponsor!



**GREENWOOD
OHLUND**

Greenwood Ohlund provides PHPDA with comprehensive accounting and fiscal management support, helping ensure strong financial stewardship in advancing their community health initiatives.

<https://www.greenwoodcpa.com>



Thank You, Sponsor!



Attorneys at Pacifica Law Group have assisted the PHPDA as outside counsel for over thirty years.

<https://www.pacificallawgroup.com>

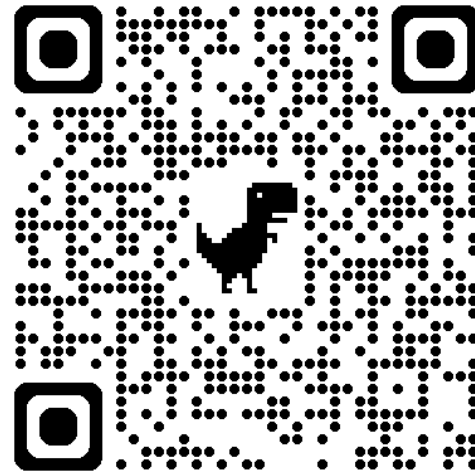





2025 All Grantees Meeting Webpage

Visit the All Grantees Meeting webpage for event information, including agenda, presentation slides and contact lists.

<https://phpda.org/all-grantees-meeting-2025>





Presentations: 2024 – 2nd Year Grantees

- Living Well Kent Collaborative
- Native American Women’s Dialogue on Infant Mortality (NAWDIM)
- Open Arms Perinatal Services
- Somali Family Safety Task Force
- South Park Senior Citizens



Community Initiated Behavioral Health Care Year 2

PACIFIC HOSPITAL PRESERVATION & DEVELOPMENT
AUTHORITY MAJOR GRANT

NOVEMBER 19, 2025



Background

Living Well Kent Collaborative (LWK) celebrated 12 years this year.

Public Health Seattle-King County data from 2017-2021 reveals higher rates of poor mental health among residents of Kent and South King County compared to the county average.

2022- LWK piloted an 18-month Community Initiated Care program in Kent, WA, where we introduced mental health basics, addressed unmet mental health needs, tackled stigma, and created a safe space for community to gather.

2024-2025- LWK implemented a new Community Initiated Care program that served Ukrainian, Russian, Arabic, Dari/Farsi, and Somali speakers. Participants met as cohorts and received trainings from subject matter experts.

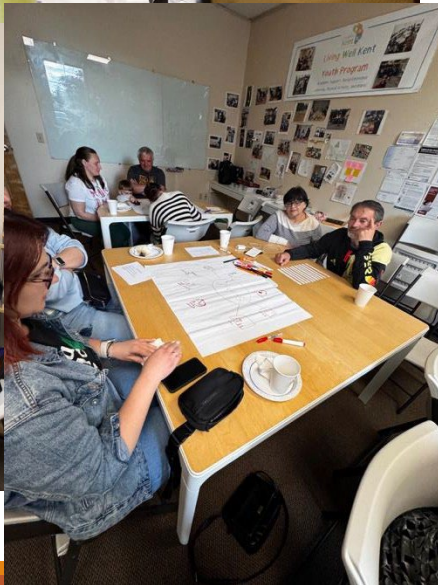
2025-2026- Year 2 of this project started!

Initiate: Community Navigators receive monthly training on behavioral health topics such as mental health first aid and opioid use disorder

Cultivate: Community Navigators convene with community leaders to pass on knowledge learned from trainings. These community leaders will integrate trainings with culturally affirming practices

Integrate: Trained community leaders will integrate knowledge into community spaces of worship, community gatherings, and individual relationships. LWK will provide support to referrals, culturally appropriate materials, and service navigation

Project Overview: Community Initiated Behavioral Health Care



What We Learned

- Trepidation, Interest, Openness
- Knowledge Level
- Cultural Experiences

Improvements

- Revised data gathering-Improving survey clarity
- Diversity of experts & topics
- More trainings with certificates for participants
- Power of Stories



Thank You!



NAWDIM

Native American Women's Dialog
on Infant Mortality

Organizing, Convening, Preparing for a Better Future

- **JANUARY**: in-person meeting, status of Indigenous maternal health in WA
 - **HONORING**: Generational knowledge, collective vision for the future
 - **INDIGENOUS ORGANIZING**: roles, relationship, respect, accountability
 - **BI-MONTHLY**: Equal Start Community Coalition
-

Leaning Into Sovereignty & Culture

Tribal funding is not DEI

Community is Culture

Honoring the Sacred Birth-Givers, the Grandmas, the Aunties and the next generation



WORK on the GROUND





nawdim

Native American Women's
Dialogue on Infant Mortality

<https://nawdim.org/>

<https://www.facebook.com/Nawdim>

Leah Tanner (Nimiipuu) leah@nawdim.org

Shelley Means (Ojibwe & Lakota) shelley@nawdim.org

Tanya Marceau (Blackfeet & Red Lake) tanya@nawdim.org



Lactation Support Services

OPEN ARMS PROVIDES FREE LACTATION SUPPORT FOR PREGNANT AND BIRTHING PEOPLE.

Through culturally matched doula care, childbirth education, lactation, and new parent support, we work alongside families to achieve important milestones, strengthen parent-baby bonding, and boost long-term parenting skills.



Advancing birth equity and justice



Improving birth and lactation outcomes for our families

OUR STORY SO FAR

1997

TODAY

OPEN ARMS HAS PROVIDED COMMUNITY-BASED SUPPORT DURING PREGNANCY, BIRTH, AND EARLY PARENTING TO NURTURE STRONG FOUNDATIONS TO LAST A LIFETIME. THROUGH DOULA CARE, CHILDBIRTH EDUCATION, LACTATION COUNSELING, AND NEW PARENT SUPPORT, WE HELP BIRTHING FAMILIES ACHIEVE IMPORTANT MILESTONES, STRENGTHEN PARENT-BABY BONDING, AND BOOST LONG-TERM PARENTING SKILLS.

VISION

THRIVING CHILDREN.
HEALTHY FAMILIES.
POWERFUL COMMUNITIES.

MISSION

PROVIDING COMMUNITY-BASED SUPPORT DURING PREGNANCY, BIRTH, AND EARLY PARENTING TO NURTURE STRONG FOUNDATIONS THAT LAST A LIFETIME.

VALUES

RESPECT - HOLDING COMPLEXITY FOR PEOPLE AND CULTURES
FAMILY - RELATIONSHIPS ARE AT THE HEART OF WHAT WE DO
JUSTICE - BOLDLY DISRUPTING OPPRESSION

2025 PHPDA GRANTEE : LACTATION SUPPORT SERVICES

- **GOAL: MAINTAINING CULTURALLY AND LINGUISTICALLY MATCHED PEER LACTATION SUPPORT TO BIPOC COMMUNITIES TO PROMOTE THE DURATION AND SUSTAINING OF CHEST/BREASTFEEDING.**

THE PROGRAM OFFERS TWO PATHWAYS:

- **EXTENDED SUPPORT: FAMILIES RECEIVE LONG-TERM SUPPORT FOR UP TO ONE YEAR, STARTING IN PREGNANCY, WITH TOOLS AND WEEKLY CHECK-INS UNTIL THE BABY TURNS EIGHT WEEKS OLD. VISITS CONTINUE BASED ON INDIVIDUAL FAMILY NEEDS AND GOALS FOR SUSTAINING LACTATION FOR SIX, NINE, OR TWELVE MONTHS.**
- **SHORT-TERM SUPPORT: FAMILIES RECEIVE URGENT SUPPORT FOR UP TO EIGHT WEEKS POSTPARTUM TO ADDRESS UNEXPECTED CHALLENGES IN THE LACTATION JOURNEY.**



OUR DATA

- WHEN WE PRESENTED LAST YEAR, WE HAD JUST RECEIVED OUR FUNDING, AND THIS WAS OUR DATA FIVE MONTHS INTO COLLECTION



- THE FOLLOWING REPRESENTS OUR DATA COLLECTED BETWEEN JULY 1, 2024, AND NOVEMBER 12, 2025:



92%

PROGRESSING TOWARDS, MET OR EXCEEDED THEIR LACTATION GOAL.

Mondays

Online Lactation Lounge

**11 AM-1 PM
PACIFIC TIME**

bit.ly/OAPSMondayLL

JOIN US!



With Elizabeth Montez, IBCLC

open arms
perinatal services

First Thursday

Online Lactation Lounge

11 AM - 1 PM
*Second Week of the Month is in-person

JOIN US!

bit.ly/ThursLounge

With Markia Brinson, LSPC

open arms
perinatal services

Come join us to chat about lactation. Folks at any part of the journey from pre-conception through weaning and beyond are welcome.

En Persona

Lactancia Para El Pueblo

Jueves 9:30-11:30am

¡BIENVENIDA!

2524 16th Ave S #305
Seattle, WA 98144


- ♥ Ven a seleccionar lo que necesites para tu bebe en nuestra Boutique Comunitaria.
- ♥ Hable con la especialista comunitaria en lactancia, Yurany
- ♥ Estar en comunidad con otros padres y personas embarazadas.



open arms
perinatal services

MONTHLY PRENATAL LACTATION CLASS

Second Thursday
10AM-12PM
Register: bit.ly/MonthlyLactation



open arms
perinatal services

Presentamos

Consultas de Lactancia a Domicilio en Español

Jueves 9:30-11:30am

JESSICA TRINIDAD
CONSULTORA DE LACTANCIA Y EDUCADORA PRENATAL

[Solicita los Servicios Aqui
bit.ly/OAPSServicios](https://bit.ly/OAPSServicios)

- ♥ Hasta 8 semanas de Asesorías de Lactancia en Español. Creadas específicamente para la Comunidad Latina.
- ♥ Visitas a domicilio disponibles para King County



open arms
perinatal services

In-Person

Bilingual Lactation Lounge - Spanish & English

Thursdays 9:30-11:30am

JOIN US!

2524 16th Ave S #305
Seattle, WA 98144


- ♥ Come Shop our Free Community Baby Boutique
- ♥ Chat with Community Lactation Specialist, Yurany
- ♥ Be in community with other parenting and pregnant folks



open arms
perinatal services

CLASE DE PRENATAL DE LACTANCIA

Fourth Tuesday
10AM-12PM
Register: bit.ly/ClasedePrenataldeLactancia



open arms
perinatal services

Introducing

Spanish Speaking Lactation Home Visiting

Thursdays 9:30-11:30am

JESSICA TRINIDAD
LACTATION COUNSELOR AND CHILDBIRTH EDUCATOR

[Request Services Here
bit.ly/OAPSServicios](https://bit.ly/OAPSServicios)

- ♥ Up to 8 Weeks of Latine Community Specific Lactation Support in Spanish
- ♥ Home Visits available in King County



open arms
perinatal services

In-Person

Parent Gathering

**2nd Thursday of the Month
11 AM - 1 PM**

JOIN US!

2524 16th Ave S #305
Seattle, WA 98144

- ♥ Participant in free monthly activities with your child
- ♥ Chat with Markia, a trained lactation and parent support provider
- ♥ Be in community with other parenting and pregnant folks



open arms
perinatal services

Somali Family Safety Task Force

Women's Health Project: FGM Prevention & Education
Pacific Hospital Preservation & Development Authority - 2025
Renewal Summary
Goal: Promoting health, safety, and empowerment for East
African immigrant women in King County.



About the Organization

The Somali Family Safety Task Force is a Community-driven non-profit based in Seattle, WA. Founded in 2004 to address gender-based violence, we have expanded to provide comprehensive support for immigrants and refugees. We started as an all-volunteer social and non-profit organization with the goal of promoting safety and well-being for African youth & families living in the Seattle area. . Our programs created by and for our community!

About the Program

- ▶ **Women's Health Project - FGM Prevention & Education:**
- ▶ - Addresses the ongoing issue of Female Genital Mutilation (FGM) among African Muslim women, particularly from Somalia and Gambia.
- ▶ - Provides education, support, and advocacy through:
 - ▶ • Small group discussions and peer support sessions
 - ▶ • Educational workshops and community events
 - ▶ • Provider trainings on culturally sensitive care
 - ▶ • Wellness checks and health access referrals
- ▶ **Program Goals:**
- ▶ - Increase understanding of FGM's health impacts
- ▶ - Improve communication with healthcare providers
- ▶ - Strengthen access to culturally safe, trauma-informed services

Key Learnings (What We Learned from the First Year)

▶ What We've Learned:

- ▶ During our first year of implementation, we learned that building trust and cultural safety is the foundation for meaningful engagement around sensitive health issues such as Female Genital Mutilation (FGM). Women were more likely to participate and share openly when sessions were facilitated by trusted community members who speak their language and understand their cultural background.
- ▶ We also learned that consistent outreach and follow-up are essential to maintain participation. Many women face competing priorities such as childcare and transportation barriers, so personal reminders and flexible scheduling were key to sustaining engagement.
- ▶ Additionally, collaboration with healthcare providers proved highly valuable. Provider training sessions helped improve understanding of FGM-related trauma and cultural context, resulting in more compassionate care for survivors.

▶ Challenges:

- ▶ Sensitive cultural barriers and stigma
- ▶ Scheduling coordination with healthcare partners
- ▶ **Fear among immigrants and refugees:** Given the current climate and uncertainty surrounding immigration issues, many community members are afraid to share personal information or attend in-person sessions, even when services are confidential.

Looking Ahead (2025 & Beyond)

Next Steps & Future Vision (adjustments we are making as a result):

- Train peer educators to sustain community outreach and FGM prevention.
- Expand provider training on culturally responsive care.
- Integrate mental health and trauma support across all activities.
- Strengthen multilingual outreach and engagement with youth and faith leaders.
- Develop a replicable model for FGM prevention in other immigrant communities.

Thank You!

Together, we're building a healthier, safer future for women and girls.



Thank you!



S O U T H P A R K

Senior Citizens



Q&A: 2024 – 2nd Year Grantees

- Living Well Kent Collaborative
- Native American Women’s Dialogue on Infant Mortality (NAWDIM)
- Open Arms Perinatal Services
- Somali Family Safety Task Force
- South Park Senior Citizens





(5) Minute Break

THANK YOU SPONSORS!

CENTURY
PACIFIC



COLUMBIA BANK



**GREENWOOD
OHLUND**



**PACIFICA
LAW GROUP**



Presentations: 2025 – 1st Year Grantees

- Gay City Health Project – Seattle’s LGBTQ Center
- Harborview Medical Center
- Northwest Health Law Advocates
- Planned Parenthood Great Northwest, Hawai’i, Alaska, Indiana, Kentucky
- ROOTS Young Adult Shelter
- Seattle Indian Health Board
- Voices of Tomorrow

The logo for Seattle's LGBTQ+ Center is centered at the top. It consists of the text "Seattle's LGBTQ+ Center" in a large, bold, black sans-serif font, with "formerly Gay City" in a smaller, black sans-serif font below it. The text is enclosed within a thick, hand-drawn style oval border that transitions from yellow on the left to green on the right. A small "TM" trademark symbol is located to the right of the oval.

**Seattle's
LGBTQ+ Center**
formerly Gay City TM

**Mission: Cultivate access and connections to promote self-determination,
liberation and joy in our communities.**

gaycity.org

400 E. Pine Street, Suite 100
Seattle, WA 98122
206-860-6969

HEALTH SERVICES

- Free HIV/STI Testing
- PrEP Navigation
- Healthcare Navigation
- Mental Health

RESOURCE PROGRAM

- Resource Center
- Mutual Aid Closet & Pantry
- LGBTQ+ Library
- Training & Technical Assistance
- DV Program



YOUTH PROGRAMS

- Mentorship Program
- Diversion Program
- Youth Discord Server
- Youth Arts Program
- Youth Advisory Council
- Youth Advocacy Media
- Youth Pride Events
- Drop-in Center

And much more!

COMMUNITY MENTAL HEALTH PROGRAM

#1 requested resource from community accessing our services

- Goals: Reduce health disparities among transgender and gender diverse individuals by addressing gender dysphoria, poor access to affirming healthcare, and acute mental health challenges.
- Overview:
 - Short term therapy program
 - Free 1:1 mental health counseling
 - Healthcare navigation

COMMUNITY MENTAL HEALTH PROGRAM

- Progress Update:
 - **June**
 - Hired contracted mental health provider
 - Research and networking
 - **August**
 - Built Navigator Manual
 - Created Mental Health Program website: <https://www.gaycity.org/mentalhealth/>
 - **October**
 - Onboarded Mental Health Program Coordinator
 - Started search for contracted supervisor
 - **November- in-progress**
 - Conducting hiring process for Healthcare Navigator
 - Onboarding contracted supervisor
 - **December**
 - Anticipated start for client enrollment in program

STIMULANT HEALTH INCENTIVE PROGRAM (SHIP)



November 2025

Background

- SHIP: a new Contingency Management program for people who use stimulants
- Funded through a PHPDA grant, implemented at Hobson Clinic (UW medicine)
- Staff: Peer Support Specialist & 0.5 FTE Program Coordinator
- Goals for the first year
 - Serve 100 participants
 - >75% of participants attend 1+ appointments with primary care or addiction medicine
 - >40% of participants attend >50% of their weekly check ins
 - >80% of participants report healthy behavioral change related to stimulant use
 - >50% of graduates have continued engagement at Hobson Clinic 12 weeks after graduation

Why Harm-Reduction Based Contingency Management?

- Contingency management = rewards for meeting goals related to safer stimulant use
- Stimulant use disorder, particularly involving methamphetamine, is a serious and growing issue in King County, contributing to high rates of illness and death.
- Evidence based treatment for Stimulant Use Disorder (41% reduction in mortality¹)
- Includes people who are interested in reducing use but not necessarily abstinence

1) Coughlin, L. N., Tomlinson, D. C., Zhang, L., Kim, H. M., Frost, M. C., Khazanov, G., McKay, J. R., & DePhilippis, D. (2025). *Contingency management for stimulant use disorder and association with mortality: A cohort study. American Journal of Psychiatry.* Advance online publication. <https://doi.org/10.1176/appi.ajp.20250053>

SHIP Pilot Program Structure

- Weekly in person check ins = Motivational interviewing, goal setting, peer support, and CM rewards. Care collaboration with other providers.
- Targeted behaviors & Rewards (for pilot, plan to expand later)
 - \$10 for abstinence from Stimulants (verified by negative Utox)
 - \$10 for weekly attendance at 1:1 check-ins with staff
 - Escalating fishbowl draws for consistent attendance & negative Utox (fishbowl contains a % of affirmations and a % of gift cards)

Supportive Programming

- SHIPmates: weekly peer support group meeting
- Warm referral network from CM program to primary care, addiction med, cardiology, etc.
- Warm hand offs to social workers, mental health practitioners, nutrition, housing and case management within Hobson Clinic (DESC & UW Medicine)
- Harm reduction supplies, safer use education and community resources
- Reducing barriers to make treatment for stimulant use easier to access (walk-in services, non-abstinent goals, wraparound health services)



Defending and Expanding Affordable Health Coverage
for Immigrants in Washington

19 November 2025

Lee Che LEONG
Lee.Che@nohla.org
(206) 420-2747

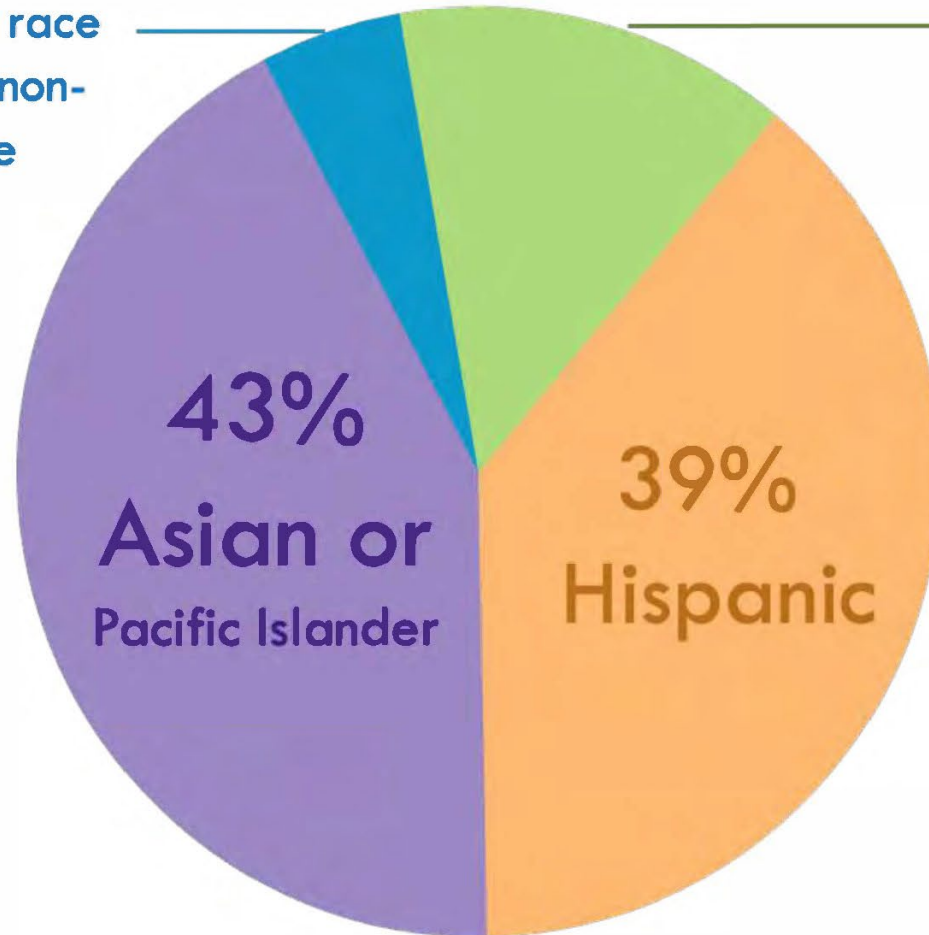
Emily BRICE
Emily@nohla.org
(773) 870-2755

Who is excluded in Washington?

Undocumented Washingtonians in 2021 per OFM

5% non-Hispanic single race
(Black, AIAN, other) & non-
Hispanic mixed-race

7% Non-Hispanic White



WA Immigrant Health Coverage Today

Prior progress

Apple Health is open to

- Kids 0-18yo
- Pregnant people
- People within 1 year postpartum

Hospital Charity Care

- Free care for people up to 200% FPL
- Discounted care for people up to 400% FPL



Emergency (AEM) Care

- For people who are not eligible for Apple Health
- with certain health conditions
- Income up to 138% FPL

November 2023
All Washingtonians can shop for health insurance on HealthPlanFinder

People with income up to 250% FPL and undocumented are **eligible for \$250 monthly state premium assistance:** Cascade Care Savings

July 2024

Apple Health Expansion, Medicaid-like program, for undocumented adults started

Autumn 2024*

Expanded eligibility for APTCs began for coverage on HealthPlanFinder

NOTE: federal DACA financial assistance ended this October

CURRENTLY
AHE funded for 2025-27, CCS for 2026

Uncertain US landscape may change things

Congressional HR 1/OBBBA Immigrant Health Timeline

November 2025

ALL lawfully present immigrants <100% FPL lose federal premium assistance for 2026

NOTE: All Washingtonians to 250% FPL still eligible for state Cascade Care Savings

October 2026

Federal Medicaid and CHIP eligibility ends for Asylees, Refugees, and many other lawfully present immigrants

*WA likely to continue coverage but **high costs***

January 2027

Federal assistance for health premiums ends for for Asylees, Refugees, and many other lawfully present immigrants

Medicare ends for Asylees, Refugees, and many other lawfully present immigrants

NOTE: Naturalized Citizens, Lawful Permanent Residents (Green Card Holders), COFA migrants, and Cuban/Haitian Entrants retain access

Access Goals

1. Maintain state health programs for undocumented immigrants
2. Expand state safety net support for lawfully present immigrants

Additionally:

- Maximize privacy when immigrants use health coverage & services
- Support communities in understanding and weighing in on complex policy environment: **join our biweekly workgroup to learn more!**

Know Your Rights information & more at: nohla.org/immigrants-access/

Planned Parenthood Great Northwest, Hawai'i, Alaska, Indiana, Kentucky (PPGNHAIK)

**PHPDA Health Equity Fund 2025 All Grantees Meeting
November 19, 2025**

Presenters:

Deb Gregoire (she/her), Area Services Director

Hannah Elzig (she/her), Institutional Giving Officer

Organization Description & Program Overview

Mission: *Together, we advocate, educate, and provide exceptional health care supporting sexual health, wellness, and reproductive freedom without judgement, without fear, without fail.*

PPGNHAIK is a leader in reproductive health care, advocacy, and education. As a safety-net provider, we target our efforts at underserved and vulnerable populations and do not limit the number of Medicaid, uninsured, or underinsured patients we serve.

King County Program Data

- 6 Planned Parenthood health centers
- 41,000 patient visits per year
 - 33,000 family planning
 - 4,000 procedural abortion & 4,000 medication abortion

Services: In-person, Direct-to-Patient & Site-to-Site Telehealth

- Full Range of Birth Control & Contraception Options
- STI/HIV Testing & Treatment
- Abortion & Miscarriage Care
- Gender Affirming Hormone Care
- Cancer Screenings
- Preventative Wellness Visits

Key Insights

Program Goal: Provide comprehensive reproductive and sexual health care to patients regardless of income, insurance status, or identity.

Access to Care

- Undeserved & Vulnerable Populations
 - Women ages 14-49
 - Medicaid, uninsured, or underinsured
 - At or below 150% FPL
 - BIPOC
 - LGBTQIA+
- Abortion
 - Planned Parenthood health centers in Washington state have seen a 40% increase in patients travelling from out-of-state to access abortion care

Health Outcomes

- Address and eliminate health inequities and disparities
- Reduced rates of:
 - Unintended pregnancies and teen births
 - Maternal and infant mortality
 - STI/HIV
 - Cancer mortality

Challenges, Adjustments, & Moving Forward



Funding Challenges at the Federal & State Level

- Title X program funding freeze
- WA Abortion Access Program funding cuts
- Medicaid defund in 5 of 6 affiliate states

Service Adjustments

- New service lines:
 - Rapid syphilis testing
 - Expanded sedation options
- TeleMAB & TeleGAHC
- Prioritizing same day, next day access
- Adjusted self-pay scale

Moving Forward – Prioritizing Private Investment

- Comprehensive fundraising campaign
- Rebuilding organizational infrastructure

Thank you!

PPGNHAIK is doing everything possible to sustain services and patient volumes during this dangerous and defining time in our nation.

We are immeasurably grateful for the support of Pacific Hospital Preservation & Development Authority for awarding PPGNHAIK with the Health Equity Fund grant. Through our partnership, we can ensure access to care in King County and secure Planned Parenthood's future.

On behalf of our thousands of patients, thank you.

27 Year-Old Patient

"I've genuinely never been treated with such great compassion in my life. I'm thankful for each and every provider here. You made a hard time as easy as possible - holding my hand when I was in pain, reassuring my feelings were valid. and treating me with such great respect."

43 Year-Old Patient

"A handful of times I have sought care from Planned Parenthood when other health care options were not available to me, and the care I've received has been vital and life changing. I'm deeply grateful and hope that you have the funding and resources to continue for many decades to come."

ROOTS Mental Health

Access Expansion

ROOTS is building a stronger pathway to mental health support for young adults ages 18 to 25 who are experiencing homelessness. **Our goal is to provide care that is immediate, consistent, and seamlessly integrated into the daily lives of those we serve,** allowing our young people to begin healing in a place where they already feel seen and supported.



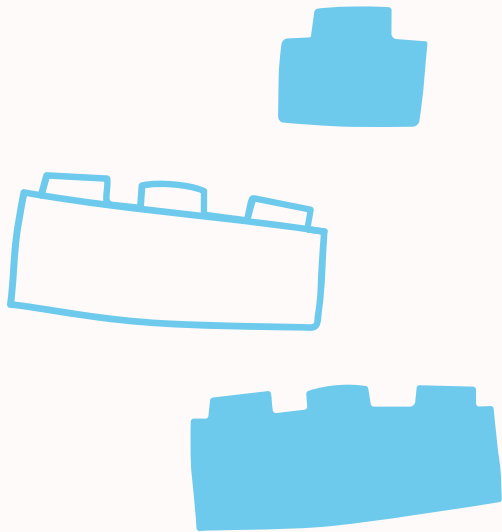
What We Are Seeing

ROOTS serves young adults who are carrying complex trauma, mental health challenges, and the daily stress of homelessness. Many struggle with anxiety, depression, PTSD, and substance use. Access to mental health care in our neighborhood remains extremely limited, and many young people with Medicaid still cannot find services.



Since the pandemic, the pressures have intensified. LGBTQIA+ youth continue to experience high rates of depression and suicide attempts. Without timely support, crises deepen and long-term stability becomes harder to reach.

What We Are Building



ROOTS has begun shifting to a deeper mental health model. Ryther clinicians are now onsite up to five days each week, providing individual therapy, group support, and crisis response inside the shelter environment.



Trauma-informed training has already begun for staff, strengthening our ability to respond with compassion and safety.



With PHPDA support, we will expand this foundation by increasing onsite mental health hours, growing resilience groups, adding staff capacity for referrals and group engagement, and creating more consistent, trusted spaces for guests. These steps will bring mental health care even closer to young adults who need it most.

Seattle Indian Health Board (SIHB)

Traditional Indian Medicine Advocacy

Seattle Indian Health Board

SIHB



Indigenous Knowledge Informed System of Care (IndigiKnow)

HEALTH & HUMAN SERVICES

Holistic care for all of our relatives

By fully integrating our health and human services, we can provide holistic care for our patients that pays equal attention to the mind, body, spiritual, and environmental components of a person's health.

POLICY & ADVOCACY

Advocating for the health of our people

By ensuring that the federal trust responsibility is honored, we are allowing all Native voices to be heard when it comes to policies and funding for Native people.

TRADITIONAL MEDICINE

Holding Traditional Medicine at our center

With Traditional Medicine informing everything we do as an organization, we are intentional in the way we support wellness for relatives. We serve all people in a Native way.

WORKFORCE DEVELOPMENT

Training the next generation of health professionals

By investing in our staff and training future generations, we are promoting and expanding culturally attuned healthcare throughout Indian Country and beyond.

DATA, EPIDEMIOLOGY, RESEARCH & EVALUATION

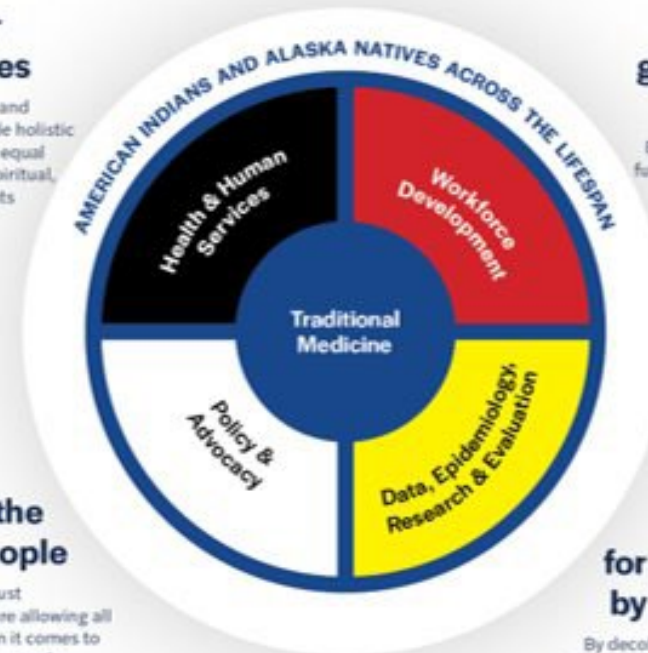
Decolonizing data for Indigenous people by Indigenous people

By decolonizing data, we are identifying the resiliencies and gaps in our communities and addressing them by using techniques rooted in Indigenous knowledge.

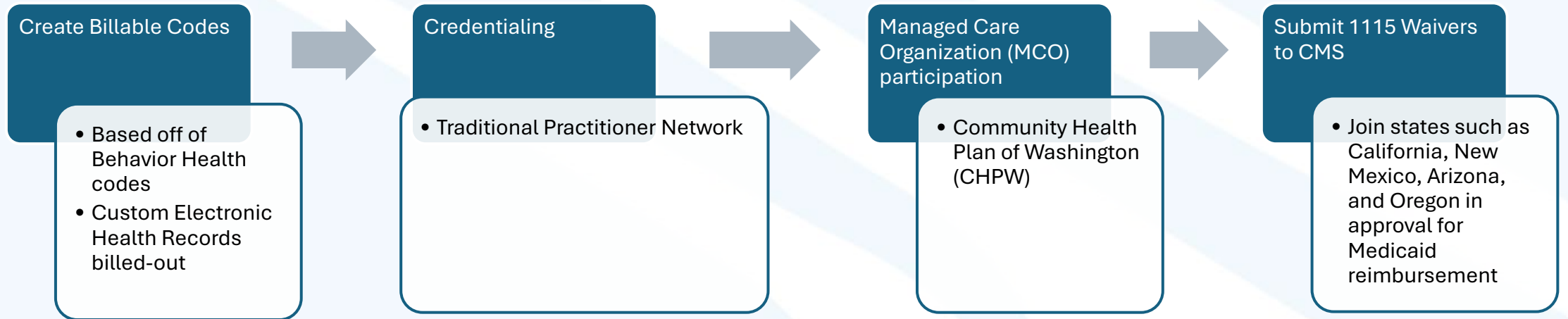
IMPACT

Walking in a Culture of Wellness

Leading an environment, anchored in tradition, that empowers our community to walk in a culture of wellness.



TIM Reimbursement Advocacy



Why Traditional Indian Medicine(TIM)?





13.9%
Decrease in anxiety

10.93%
Decrease in depression

17.85%
Decrease in alcohol consumption

41.148%
decrease in suicidal ideation *relatives under high-risk categories showed a decrease of 71.83%





Culturally and Linguistically Responsive Behavioral Health Care for East African Immigrants and Refugee Families

PHPDA: Health Equity Fund

Voices of Tomorrow



Voices of Tomorrow

Community-based nonprofit serving East African immigrant and refugee families in King County, Washington.

Founded in 2012 by East African educators, the organization works to close early-learning gaps by providing culturally and linguistically responsive programs.

- Somali-English dual-language preschool, home-visiting services, family support, and policy advocacy
- Recognizing the deep impact of trauma and stress in refugee communities, VOT has built a **trauma-informed Health Services Department**, offering culturally appropriate mental health support, social-emotional development for young children, and healing for whole families.

Project Summary & Activities

This project aims to address behavioral health disparities among East African immigrant and refugee families, particularly those with children aged birth to five, by improving access to culturally responsive mental health care.

Recruit, hire, and onboard two licensed behavioral health providers who are fluent in families' languages and reflective of their cultures.

Provide direct behavioral health services for children and extended family members through a trauma-informed and culturally responsive framework, integrating modern therapeutic techniques and traditional healing practices. Each client will receive up to 10 therapy sessions.

Establish long-term program viability by securing contracts with Washington's Managed Care Organizations to bill Medicaid/Apple Health for eligible services.

- Serve at least 100 unduplicated clients by the end of the fiscal year
- Deliver at least 800 therapy sessions
- Each client will receive:
 - Intake Session with Tailored Mental Health Service Plan (Treatment Plan)
 - Receive individual, group, family, or child therapy
 - Qualitative self-report satisfaction survey

All therapy notes, assessments, and client information will be stored in our HIPAA-compliant EHR system, Tebra

Key Insight

What access to care are you aiming to create through your program, and for whom?

We aim to create a family-centered, culturally and linguistically responsive behavioral health care for East African immigrant and refugee families.

Our goal is to ensure that families who have historically faced barriers to mental health care can receive timely, culturally attuned support for both caregivers and young children.

What health outcome do you hope to achieve?

- Improved mental health and overall well-being for East African immigrant and refugee families, demonstrating progress toward their therapy goals
- Reduce mental health stigma within the East African community, leading to increased acceptance and utilization of culturally responsive behavioral health services and their therapeutic tools in daily life
- Build stronger family relationships, recognizing that healthy family dynamics are foundational to emotional well-being, resilience, and healing for both children and caregivers.

Thank You



Q&A: 2025 – 1st Year Grantees

- Gay City Health Project – Seattle’s LGBTQ Center
- Harborview Medical Center
- Northwest Health Law Advocates
- Planned Parenthood Great Northwest, Hawai’i, Alaska, Indiana, Kentucky
- ROOTS Young Adult Shelter
- Seattle Indian Health Board
- Voices of Tomorrow





Topical Peer Networking

- **One mic.** One person speaks at a time.
- **Open minded.** Everyone comes from different places and from different paces at which people will process.
- **Intent & Impact.** We hold ourselves accountable and are responsible for the consequences of what we say.
- **Have fun!** Lean in, participate, ask curious questions, and take care of yourself.



Topical Peer Networking

Table 1	Table 2	Table 3
Responding to Reduced or Lost Government Funding	Navigating New Legal Challenges Affecting Your Work	Creating and Sustaining Safe Community Spaces
Table 4	Table 5	Table 6
Supporting Immigrants, Refugees, and Asylum Seekers	Mental and Behavioral Health Strategies	Substance Use and Harm Reduction Services

- Each table includes a guiding question to help your group start the conversation.
- Take notes and be ready to share key insights from your table's discussion, especially anything you think would benefit the full group and help PHPDA better understand community needs.



Topical Peer Networking – Guiding Questions

TABLE 1 – Responding to Reduced or Lost Government Funding

How are you sustaining your work when funding becomes limited or uncertain?

Think about strategies, partnerships, or adjustments that have helped you stay steady during funding shifts.

TABLE 2 – Navigating New Legal Challenges Affecting Your Work

What recent legal or regulatory changes are affecting your work, and how are you responding?

Share what you're seeing and how you're helping staff and community members navigate changes.

TABLE 3 – Creating & Sustaining Safe Community Spaces

What practices help you create safe and welcoming spaces for your community?

Consider what builds trust, safety, and belonging in physical or programmatic spaces.

TABLE 4 – Supporting Immigrants, Refugees & Asylum Seekers

What approaches are most effective when supporting immigrants, refugees, and asylum seekers?

Discuss what's working in outreach, trust-building, cultural responsiveness, and partnerships.

TABLE 5 – Mental & Behavioral Health Strategies

How are you integrating mental and behavioral health support in a community-centered way?

Share what's helped increase access, reduce stigma, or support whole-person care.

TABLE 6 – Substance Use & Harm Reduction Services

What harm reduction strategies are having the most impact in your community?

Talk about what's resonating, what's reducing harm, and what's strengthening community safety.

CERTIFICATE OF RECOGNITION

PACIFIC HOSPITAL PRESERVATION & DEVELOPMENT AUTHORITY RECOGNIZES

Afghan Health Initiative

For your outstanding achievement in establishing the Afghan Health Coalition to improve prenatal care and reduce health disparities among Afghan immigrant and refugee women and integrating Community Health Navigators into clinical settings for culturally tailored support.

Awarded on November 19, 2025



Christina Bernard, Acting Executive Director



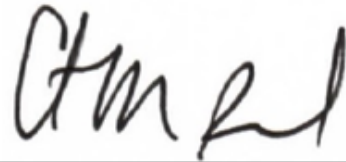
CERTIFICATE OF RECOGNITION

PACIFIC HOSPITAL PRESERVATION & DEVELOPMENT AUTHORITY RECOGNIZES

Downtown Emergency Service Center

For your outstanding achievement in providing intensive medical care management, in partnership with Harborview Medical Center, to a subset of DESC's clients with complex and interrelated medical and behavioral health challenges.

Awarded on November 19, 2025



Christina Bernard, Acting Executive Director



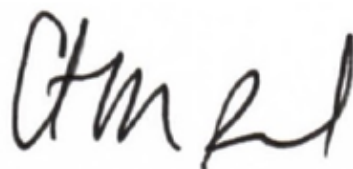
CERTIFICATE OF RECOGNITION

PACIFIC HOSPITAL PRESERVATION & DEVELOPMENT AUTHORITY RECOGNIZES

Elizabeth Gregory Home

For your outstanding achievement in helping women experiencing homelessness access health care, transportation, education, and self-advocacy through Health Navigation.

Awarded on November 19, 2025



Christina Bernard, Acting Executive Director



CERTIFICATE OF RECOGNITION

PACIFIC HOSPITAL PRESERVATION & DEVELOPMENT AUTHORITY RECOGNIZES

Neighborcare Health

For your outstanding achievement in delivering culturally sensitive midwifery care to immigrants, refugees, and low-income people, and reducing maternal health disparities through Perinatal Coordination.

Awarded on November 19, 2025




Christina Bernard, Acting Executive Director



CERTIFICATE OF RECOGNITION

PACIFIC HOSPITAL PRESERVATION & DEVELOPMENT AUTHORITY RECOGNIZES

Peer Washington

For your outstanding achievement in improving health outcomes for justice-involved people in South King County municipal courts by facilitating access to peer support services.

Awarded on November 19, 2025



Christina Bernard, Acting Executive Director



CERTIFICATE OF RECOGNITION

PACIFIC HOSPITAL PRESERVATION & DEVELOPMENT AUTHORITY RECOGNIZES

UTOPIA Washington

For your outstanding achievement in establishing the Mapu Maia Clinic to provide culturally aligned, accessible healthcare services to the LGBTQI Pacific Islander community.

Awarded on November 19, 2025



Christina Bernard, Acting Executive Director



CERTIFICATE OF RECOGNITION

PACIFIC HOSPITAL PRESERVATION & DEVELOPMENT AUTHORITY RECOGNIZES

Youth Experiential Training Institute

For your outstanding achievement in expanding outdoor recreation programming to improve health outcomes for BIPOC, immigrant, and low-income students in South King County.

Awarded on November 19, 2025



Christina Bernard, Acting Executive Director



Thank you for attending the
2025 All Grantees Meeting!



SPONSORS

CENTURY
PACIFIC

